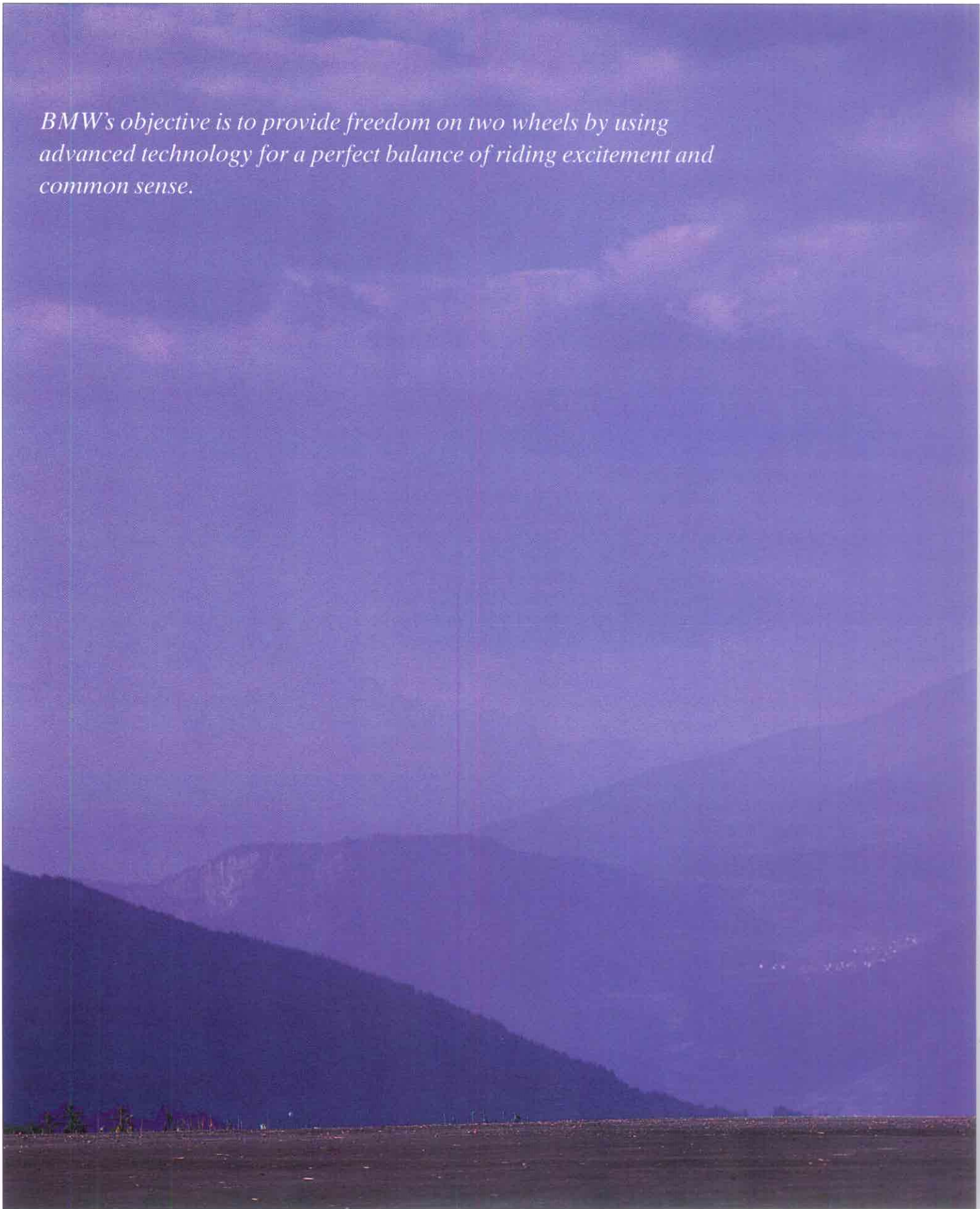


**THE BMW 1990 MOTORCYCLE RANGE:
PERFECTION IS THE ONLY WORD.**



BMW's objective is to provide freedom on two wheels by using advanced technology for a perfect balance of riding excitement and common sense.



Riding a motorcycle means freedom, independence and a thrilling experience all rolled up into one.

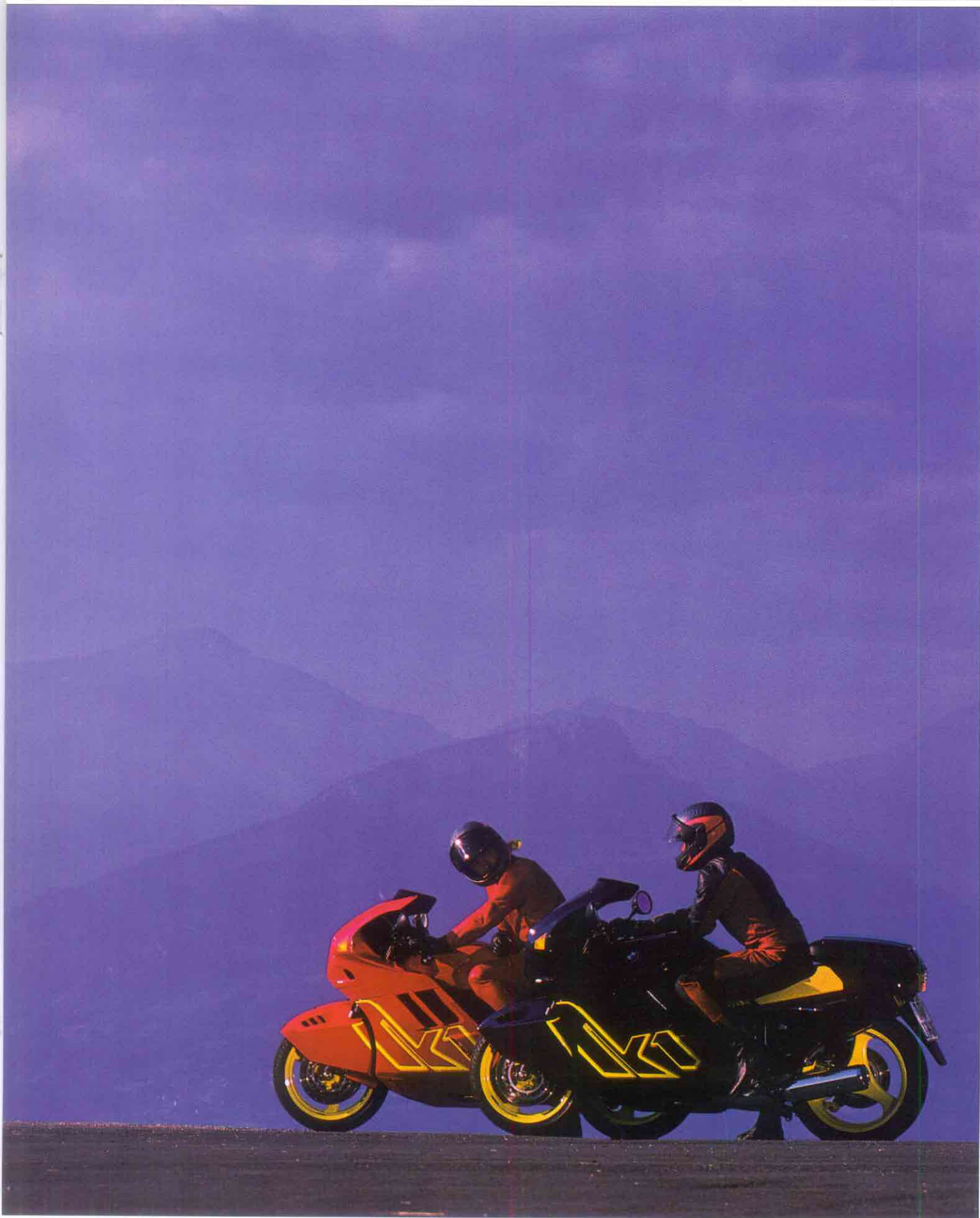
Riding a motorcycle means giving free rein to your spirit and soul, actively

enjoying the thrill of motion and maybe even experiencing a bit of adventure. No matter whether you're out for a short joy ride or a long motorcycle tour. No matter whether you're riding alone or

in a group of motorcycle aficionados.

With a BMW you can substantially enhance this unique feeling of riding pleasure. For just a few miles on a BMW will show you clearly that riding a motor-

BMW MOTORCYCLES. FREEDOM ON TWO WHEELS.



cycle can be an even greater experience than you might have imagined. Because BMW motorcycles are different from others. What makes them particularly outstanding are their excellent all-round

qualities providing everything you need for sheer riding pleasure at its very best.

So come out on a BMW yourself to discover that blissful feeling of freedom on two wheels. It doesn't matter which

style of riding pleasure you prefer, you'll always find your ideal machine within the BMW range.

BMW. THE NAME ALONE SAYS ENOUGH.



motorcycle in Germany was a Boxer – the BMW R100 GS. The legend therefore lives on stronger than ever before. And thanks to progressive technology, it is also better than ever before.

But despite all this progress and modern technology, one feature of the Boxer has remained conservative in the best sense of the word: its invincible reliability and lasting quality.

BMW and the motorcycle have been linked inseparably since 1923. More than 65 years of experience with the motorcycle have made BMW a make with unmistakable class and character. Unique in its looks, functional to the last detail, perfect in every respect, up-to-date and progressive in technology, individual and rider-oriented in styling – these are the features that characterize every BMW. And they are the features which link discerning riders the world over with the BMW marque – features that have made BMW so successful for years and decades.

The enthusiasm felt by so many for BMW is therefore based on good reasons and a long tradition. And maybe it also explains the emotional relationship – indeed, the genuine friendship – riders feel for their BMW. For where else do you find that kind of feeling today?

This – and the people who have written history at BMW – has been the subject of many books and publications.

First there was the Boxer.

It was BMW engineer Max Friz who had the ingenious idea to swivel the flat-twin engine he had just created by 90° in order to cool the cylinders reliably and efficiently in the air flowing by left and right. An ideal solution to which BMW and motorcycle connoisseurs have remained faithful to this very day. For the genuine enthusiast would not even dream of BMW without the Boxer.

The development of BMW motorcycles has of course been strongly influenced by motorsport, putting BMW machines in the lead not only on the race track and in the toughest rallies. 37 world and European championships set up by

The original: the R32 launched by BMW in 1923. The first rendition of BMW's typical Boxer design.

BMW as well as innumerable world records fill the annals of motorcycle history. Added to this, revolutionary developments in engine technology, streamlining, suspension and brake technology have enabled private teams supported by BMW to score numerous wins in both rallies and circuit races.

So the BMW Boxer is as strong as ever: Successful in the Battle of the Twins.

Victorious in the world's toughest rallies, such as Paris-Dakar. And a winner on the road: In 1988 the best-selling



To this day there's no better engine for motorcycles up to 60 bhp than the two-cylinder. And one of the best two-cylinders is certainly the Boxer. The reasons: ideal thermal stability, low weight, low center of gravity, long running life, simple maintenance, supreme torque, outstanding flexibility and a perfect balance of all forces. Add to this the classic looks of the Boxer and you have the perfect concept.



Daytona Beach 1989: the Boxer in motorsport today. There are no limits to BMW's motorcycle heritage and strong, reliable technology.

1983-1985:

The motorcycle enters a brand new future.

Launching the K100-Series in 1983, BMW established a new benchmark in motorcycle technology: the straight-four power plant.

Then, just two years later, BMW closed the gap between two and four cylinders by introducing the K75 with its straight-three power unit.

Technically speaking, the K100 and K75 are very close relatives. But in character the different number of cylinders makes both motorcycles quite unique. The four-cylinder develops the power and performance of a gentle giant, the three-cylinder is the lean and mean muscle machine. A feature both engines have in common, however, is the unique BMW Compact Drive System.

BMW Compact Drive means a liquid-cooled straight-four or straight-three power plant in longitudinal arrangement with direct shaft drive. A power plant with exemplary ease of service and access from all sides.

With a low center of gravity, superior engine power and torque for a dynamic style of riding and supreme performance on the road.

Both engines feature advanced electronic control providing harmony, for example, of ignition and fuel injection. This means powerful acceleration, optimum starting and warm-up characteristics, smooth refinement and ample power at any speed.

Combining the best ingredients gives you the best result: four-valve technology BMW-style.

The 16-valve four-cylinder power plant of the BMW K1 is a new milestone in BMW engine technology. The ultimate achievement in reliable power, low weight and proven design.

To create this unique power plant, all the components of BMW's unparalleled K engine concept have been further optimized without forfeiting typical BMW assets such as the low center of gravity, good axle load distribution, exemplary ease of service, superior torque curve and excellent riding stability.

Comparing the two and four-valve versions, engine output is up from 82 bhp to 95 bhp at 8000 rpm. Torque has been boosted from 63 ft/lb at 6000

rpm to 73 ft/lb at 6250 rpm. And despite its staggering performance, this power plant remains a model example of dependable high-performance technology – which is certainly one of the reasons for its unusual success right from the start: Just after being shown to the public for the first time, the K1 was immediately voted Motorcycle of the Year 1989 in Germany by the readers of MOTORRAD, Germany's No. 1 motorcycle journal.

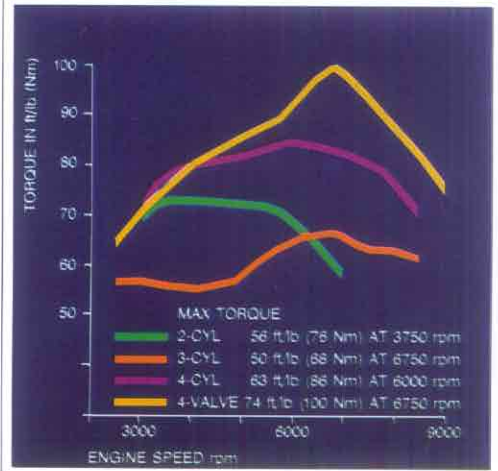
Built for progress through and through.

But this unique four-cylinder 16-valve power plant has even more to offer. For it features the most advanced electronics for even better performance and refinement on the road. It is the first production motorcycle with Digital Motor Electronics (Motronic) already used by BMW in the most advanced automobiles and now developed specifically for the motorcycle.

Motronic incorporates separate grid control of the ignition and fuel supply, ensuring optimum engine management under all running conditions (when starting the engine cold, warming up, starting the engine warm, idling, etc.). It also monitors the overrun control as an additional contribution to fuel economy.

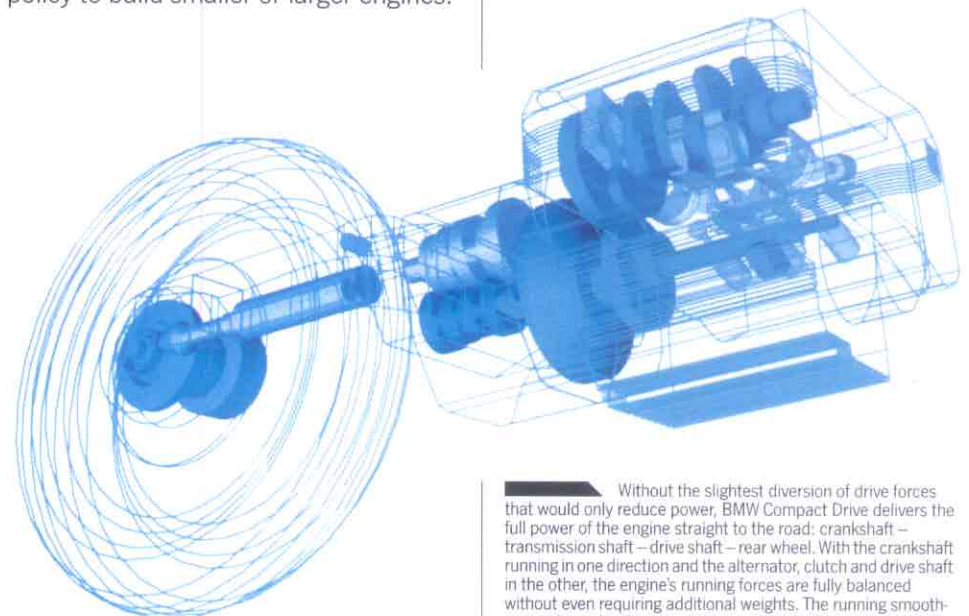
BMW motorcycle engines therefore reflect the high standard of BMW technology in every respect. They are practical, performance-oriented, up-to-date and efficient. And they have further all-round qualities such as dependability, reliability and ease of service.

This also explains why it is not BMW's policy to build smaller or larger engines.



All BMW engines offer superior torque from just above idle speed and a steep power curve as a symbol of their superior output.

For that would mean either making concessions in terms of performance or accepting practical disadvantages such as superfluous weight and ballast. Which are compromises BMW would never make.



Without the slightest diversion of drive forces that would only reduce power, BMW Compact Drive delivers the full power of the engine straight to the road: crankshaft – transmission shaft – drive shaft – rear wheel. With the crankshaft running in one direction and the alternator, clutch and drive shaft in the other, the engine's running forces are fully balanced without even requiring additional weights. The running smoothness achieved in this way makes a substantial contribution to the comfortable and relaxed riding experience typical of BMW.

New concepts for added safety.

Each BMW incorporates all the experience of a renowned manufacturer in the field of road safety. In researching and developing new safety technologies for the motorcycle, BMW uses advanced computer systems for simulating riding characteristics under the most extreme conditions.

Suspension concepts, individual components, the stability of the frame and the entire fairing are tested and optimized time and again for ultimate perfection. Computerized dynamometers then put complete suspension components and sub-assemblies through their paces to check out their performance under the toughest conditions. Finally, after long and grueling practical tests, the suspension is able to provide the high standard of all-round safety demanded by BMW at all times.

This extra safety also becomes evident through the quality of the design.

**High-Tech for optimum safety:
BMW motorcycle ABS.**

Perhaps the clearest proof that BMW invests in the development of ultra-modern safety technology more than virtually any other manufacturer is provided by our fully electronic motorcycle ABS – the first and still the only anti-lock braking system of its kind in the world and, in the words of the motorcycle press, “a great revolution introducing the second century of the motorcycle”. A justified statement considering that ABS



represents an essential milestone in perfecting the man/machine system on the way to even greater riding safety. BMW ABS helps prevent the wheels from locking and the motorcycle rider maintain control. And it helps ensure optimum stopping power on the road. All this is made possible by the most sophisticated and advanced electronics supervising the entire braking procedure.

The unique benefit provided by ABS is that the rider is able to brake safely in an emergency, even on intermittent wet, dry or slippery patches on the road. His motorcycle will remain stable and the rider will remain in control even in an extreme situation. For when braking on a straight or in that typical “panic” situation, ABS can help the rider avoid a fall. It pays off particularly for the less skilled rider, who can achieve full stopping power immediately with ABS, without the usual problems.

**It's a really good feeling to have ample
safety reserves.**

One of BMW's consistent principles is that more performance must always go together with more safety. This is why the high-performance models in the K and GS-Series feature the patented BMW Paralever.

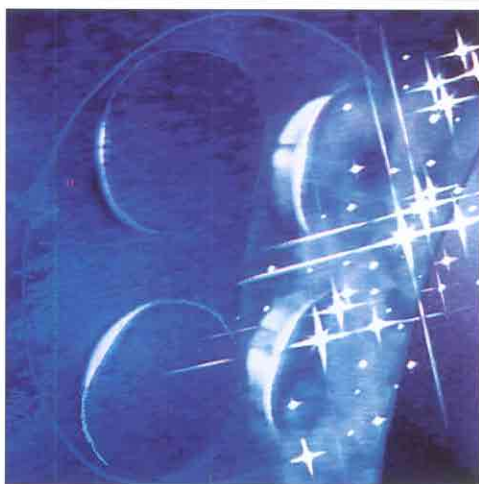
The advantage of this unique design is that while the rear-wheel swinging arm is no longer than a conventional unit, it has the effect of a much longer, rigid arm with all its extra stability.

On the road this means hardly any brake studder or instability under changing loads, a more comfortable ride, even better traction and extra smoothness in fast but bumpy bends.

Just one more example to show how BMW provides everything you need for extra safety and riding pleasure. With an intelligent overall concept and perfect, progressive solutions to the last detail.



The BMW Paralever – a suspension concept that gives the top models in the K and GS-Series their outstanding riding characteristics. In the words of MOTORRAD, Germany's No. 1 motorcycle journal, the Paralever ensures “optimum handling and directional stability even at high speeds – the suspension of the K1 fulfills the most dynamic standard.”



Introducing the four-cylinder 16-valve power plant, BMW has given multi-valve technology what it previously lacked in the motorcycle world: the design quality of the BMW four-cylinder combined with the built-in high performance of Digital Motor Electronics (Motronic).

**The BMW 1990 model year:
More progress. More riding pleasure.
More choice.**

How do you envision your dream machine? Is it a super sports, an all-rounder motorcycle or a more comfort-oriented bike? Is it classic or modern? Whatever it is, BMW offers a wide range of sports machines, sport tourers and enduros for all demands, for all styles of riding, for the "beginner" and experienced rider, and for virtually every

purpose. The two-cylinder BMW Boxers and the three and four-cylinder BMW K-Series give you a wide range to choose from. From the thoroughbred, state-of-the-art performance machine for the High-Tech enthusiast through the strong and invincible tourer for the adventure, fun and leisure-time biker all the way to the almost luxurious high-comfort motorcycle for the aficionado of long-distance touring. Not to forget the grass roots models for the purist who enjoys riding pleasure in its most original form, whether in town or on short trips.

Over and above these differences, all

BMW's have many essential qualities in common. Which means that no matter which BMW you choose, you can always be sure it's a good choice. For every BMW gives you what you need in terms of sheer riding pleasure, reliability, and economy. Everything for a long and good friendship.

Please see the separate brochures for further information on our individual models.



Hardly any other manufacturer can offer the same wide range of big bikes as BMW. From the timeless classic all the way to the future-oriented high-performance machine, from the tourer, leisure-time and adventure bike all the way to the super sports racer.

BMW OFFERS YOU MORE THAN JUST A LOT. BMW OFFERS YOU EVERYTHING.

BMW means far more than motorcycles alone.

Whenever people hear the name BMW they think of top-of-the-range motorcycles with outstanding technologies and supreme quality.

And this is not surprising considering that BMW's motorcycle factory in Berlin is one of the most modern production facilities in Europe. At BMW's Research and Development Center in Munich, our motorcycle engineers have all the know-how and capacities of one of the motorcycle industry's most advanced think tanks at their disposal.

Another factor is that with BMW it is quality – and not quantity – that comes first. In every respect and with every machine. With BMW's Original Parts and with our rider's and motorcycle equipment – where we offer a wider range than any other motorcycle manufacturer. And, finally, with BMW's reliable, worldwide service throughout a long running life.

But even that is not all. For BMW's wide model range is supplemented by many additional motorcycle service offerings – for example safety courses and rider training provided by specialists and professionals for both the beginner and experienced rider.

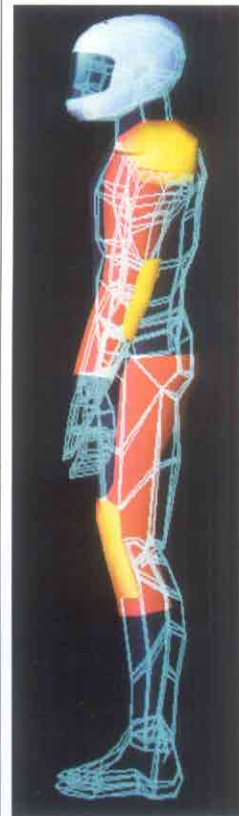
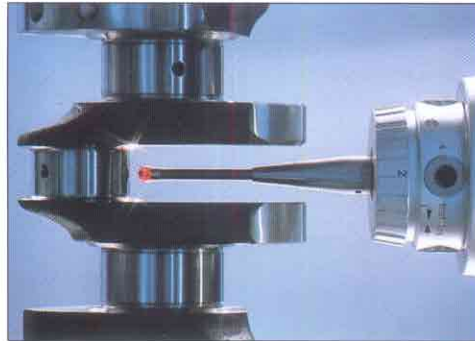
Then BMW also offers individual get-to-know-your-motorcycle tours and many other possibilities of participating in special activities and test rides organized by your BMW Dealer, enabling you to find and try out your motorcycle in peace and quiet. And there's BMW's international motorcycle tours with fantastic and well-organized motorcycle adventure trips to virtually all continents.

If you want to finance or lease your machine instead of buying it, BMW again offers you the facilities you need.

So you see that there are many good reasons to choose a BMW. And to remain a loyal BMW rider like so many others. When are you going to come into the BMW world?

Your BMW Dealer looks forward to seeing you.

Quality made by BMW: advanced design, production and quality control procedures. Plus German engineering by hand wherever required.



Safety and practical value have top priority also with BMW's rider's equipment. The entire range of BMW accessories comprising far more than 350 parts is conceived and developed by designers, stylists and engineers with decades of motorcycle experience. The latest example is the BMW Gore-Tex suit for all weather conditions.



The expert is able to master his machine and is aware of the relevant laws of physics. He knows that riding dynamics allow much more than the beginner would ever believe – but that it also sets limits which not even the most skillful rider on the best motorcycle may exceed. The rider able to handle his bike safely up to the limit will also be the safer rider in everyday traffic. And precisely this is the objective of BMW's safe riding courses and practise sessions.

The models illustrated here may include optional extras which do not form part of the standard delivery and are supplied at extra charge only. Some programs may only be available at participating dealerships. Please consult your BMW Dealer for precise details. We reserve the right to modify designs and amend equipment specifications.

© 1989 BMW Motorrad GmbH + Co. Munich, Federal Republic of Germany. Not to be reproduced wholly or in part without written permission of BMW Motorrad GmbH + Co. Printed in West Germany 11/89 9 11 20 73 20



Sheer riding pleasure